



job name:   
type:

## 18"/24" sq.too™ ceiling spec sheet 90CRI

### material

2" smooth square extruded architectural 6063 aluminum outer housing in six lengths.

### LED

COB in 2700K, 3000K, 3500K, or 4000K 90+ cri standard rated >36,000 hours L70 (6.8K) per LM-80 test data, and 71,000 hours projected life per IES TM-21.

### downlight optics

Khatod® Cosmo 50mm dia 16mm high (RoHS compliant) available in 12° spot, 25° medium, 38° wide

### driver

constant current, class P, class 2 power unit, class A sound rating, universal input (120-277V) programmable driver, 5% minimum dimming level, PF >0.90. protections include short circuit, input/output isolation and surge protection (3KV). wired for 0-10v dimming from factory.

### mounting

#### standard

driver in junction box (requires 2 1/8" deep electrical box). 5"sq canopy painted to match fixture. satin black canopy standard on wood finishes.

#### remote enclosure (.LV) (optional)

the standard driver can be remote mounted up to 33ft from the LED. suspension length should be considered in distance. remote enclosure supplied. for distances greater than 33ft consult factory. for Chicago Plenum installation consult factory.

### finish

select from 15 standard powder coat paint finishes or 3 wood finishes (listed below) or specify RAL# for custom colors..

### emergency

if required, recommend use of inverter (by other).



## catalog number

size	beam	CCT	lumens	paint finish
<b>C4018</b> driver in j-box	<b>S</b> 12° spot	<b>27</b> 2700K	<b>L1</b> 360 lm	<b>AP</b> anodized paint
<b>C4018.BABA</b> driver in j-box	<b>M</b> 25° med			<b>BS</b> brass
<b>C4018.LV</b> remote enclosure	<b>W</b> 38° wide	<b>30</b> 3000K	<b>L2</b> 630 lm	<b>BU</b> blue
2"sq X 18.25"ht		<b>35</b> 3500K	<b>L3</b> 900 lm	<b>BZ</b> bronze
		<b>40</b> 4000K	<b>H1</b> 1265 lm	<b>CP</b> champagne
<b>C4024</b> driver in j-box			<b>H2</b> 1805 lm	<b>FB</b> flat black
<b>C4024.BABA</b> driver in j-box				<b>GM</b> gun metal
<b>C4024.LV</b> remote enclosure				<b>MB</b> military blue
2"sq X 24.25"ht				<b>MW</b> matte white
				<b>OR</b> orange
				<b>RD</b> red
				<b>SB</b> satin black
				<b>SS</b> satin silver
				<b>TG</b> textured gray
				<b>YO</b> yellow



remote enclosure

### premium finish

**RAL** specify RAL#

### wood finish

**ASH** ashwood  
**ENG** english brown oak  
**ESP** espresso

job name:   
 type:

## 36"/48" sq.too™ ceiling spec sheet 90CRI

### material

2" smooth square extruded architectural 6063 aluminum outer housing in six lengths.

### LED

COB in 2700K, 3000K, 3500K, or 4000K 90+ cri standard rated >36,000 hours L70 (6.8K) per LM-80 test data, and 71,000 hours projected life per IES TM-21.

### downlight optics

Khatod® Cosmo 50mm dia 16mm high (RoHS compliant) available in 12° spot, 25° medium, 38° wide

### driver

constant current, class P, class 2 power unit, class A sound rating, universal input (120-277V) programmable driver, 5% minimum dimming level, PF >0.90. protections include short circuit, input/output isolation and surge protection (3KV). wired for 0-10v dimming from factory.

### mounting

#### standard

driver in junction box (requires 2 1/8" deep electrical box). 5"sq canopy painted to match fixture. satin black canopy standard on wood finishes.

#### remote enclosure (.LV) (optional)

the standard driver can be remote mounted up to 33ft from the LED. suspension length should be considered in distance. remote enclosure supplied. for distances greater than 33ft consult factory. for Chicago Plenum installation consult factory.

### finish

select from 15 standard powder coat paint finishes or 3 wood finishes (listed below) or specify RAL# for custom colors..

### emergency

if required, recommend use of inverter (by other).



## catalog number

size	beam	CCT	lumens	painted finish
<b>C4036*</b> driver in j-box	<b>S</b> 12° spot	<b>27</b> 2700K	<b>L1</b> 360 lm	<b>AP</b> anodized paint
<b>C4036.BABA*</b> driver in j-box	<b>M</b> 25° med		<b>L2</b> 630 lm	<b>BS</b> brass
<b>C4036.LV*</b> remote enclosure	<b>W</b> 38° wide	<b>30</b> 3000K	<b>L3</b> 900 lm	<b>BU</b> blue
2"sq X 36.25"ht		<b>35</b> 3500K	<b>H1</b> 1265 lm	<b>BZ</b> bronze
<b>C4048*</b> driver in j-box		<b>40</b> 4000K	<b>H2</b> 1805 lm	<b>CP</b> champagne
<b>C4048.BABA*</b> driver in j-box				<b>FB</b> flat black
<b>C4048.LV*</b> remote enclosure				<b>GM</b> gun metal
<b>P4048.LV.BABA*</b> remote enclosure				<b>MB</b> military blue
2"sq X 48.25"ht				<b>MW</b> matte white
				<b>OR</b> orange
				<b>RD</b> red
				<b>SB</b> satin black
				<b>SS</b> satin silver
				<b>TG</b> textured gray
				<b>YO</b> yellow

\*extended lead time



remote enclosure

### premium finish

**RAL** specify RAL#

### wood finish

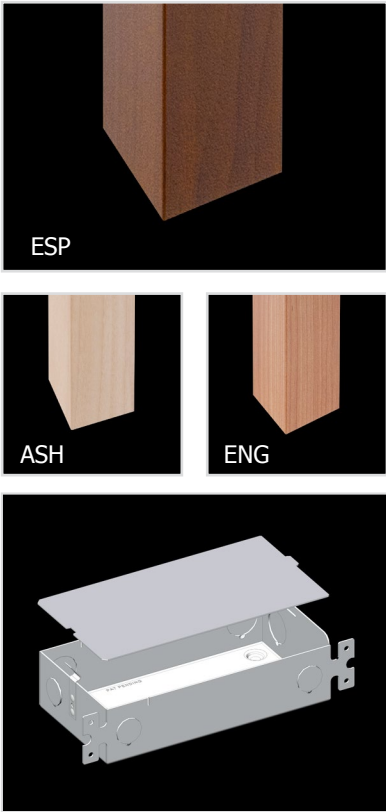
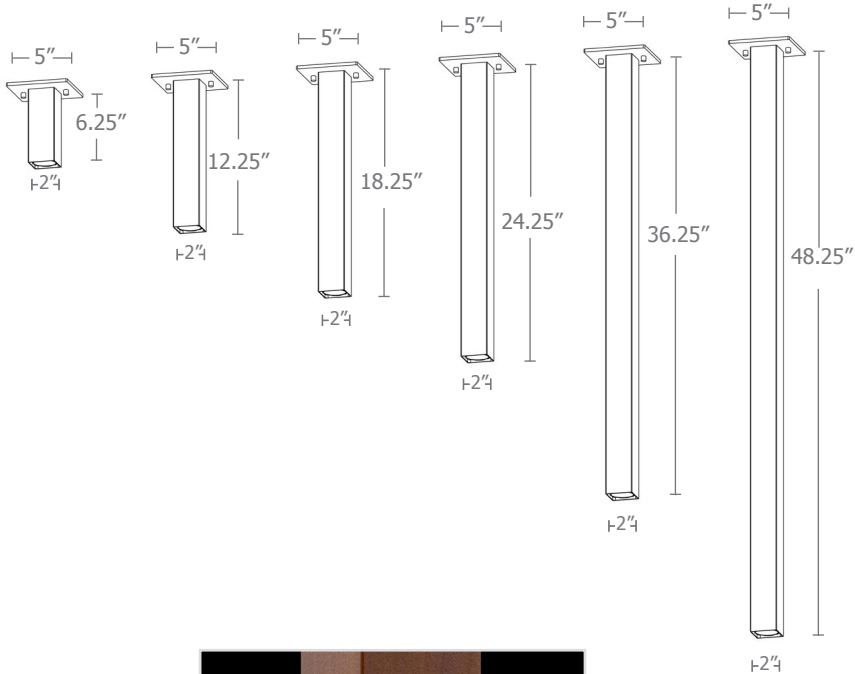
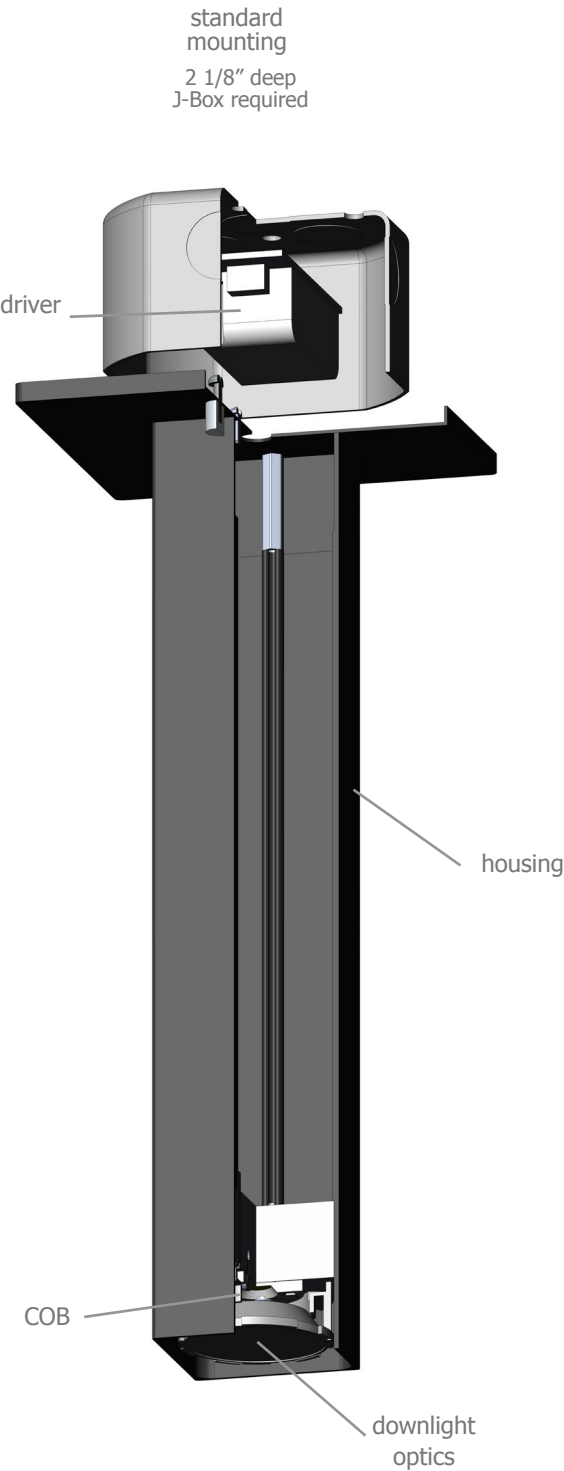
**ASH** ashwood  
**ENG** english brown oak  
**ESP** espresso

This product meets the guidelines for the Build America, Buy America Act. Some Exclusions Apply. For more information and full list of eligible SKUs, please contact the factory at info@impactltg.com

www.impactltg.com / 314-427-1212 / saint louis, mo

impactltg 

specifications subject to change © 2025 rev. 09/11/2025



Calculation Table

Consult factory for applications assistance

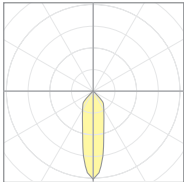


Cat No	Delivered* Lumens	Watts 120V / 277V	IES File #		LLF to be applied
L1	360	3	07222C	spot	.30
			07222B	med	.30
			07222A	wide	.30
L2	630	6	07222C	spot	.53
			07222B	med	.53
			07222A	wide	.53
L3	900	9	07222C	spot	.76
			07222B	med	.76
			07222A	wide	.76
H1	1265	13	07222C	spot	1.07
			07222B	med	1.07
			07222A	wide	1.07
H2	1805	19	07222C	spot	1.52
			07222B	med	1.52
			07222A	wide	1.52

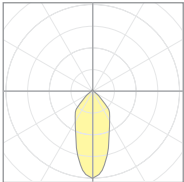
\*delivered lumens based on 4000K, 90+ cri

The application of a Light Loss Factor is required to:

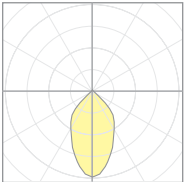
- match the lumen output for the power module specified
- incorporate the increased lumen output due to LED/Driver upgrades



07222C  
P40xx-S-40H1  
S 12° spot

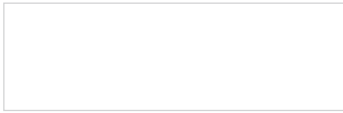


07222B  
P40xx-M-40H1  
M 25° med



07222A  
P40xx-W-40H1  
W 38° wide

## Powder Coat Paint Finishes



**MW** matte white



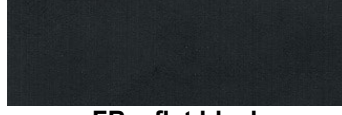
**AP** anodized paint



**SS** satin silver



**TG** textured gray



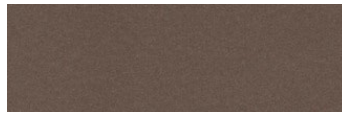
**FB** flat black



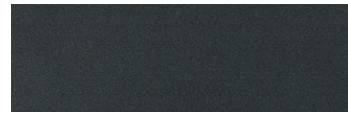
**SB** satin black



**CP** champagne



**BZ** bronze



**GM** gun metal



**OR** orange 2011



**BU** blue 5017



**BS** brass



**RD** red 3020



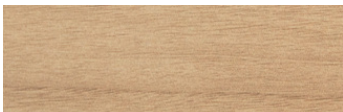
**YO** yellow 1018



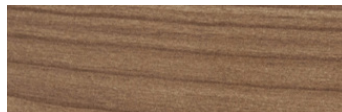
**MB** military blue

## Premium Finishes\*

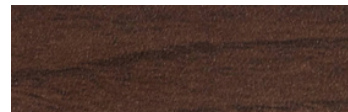
### Wood Finishes



**ASH** ashwood



**ENG** english brown oak



**ESP** espresso

For accurate color verification, actual finish samples are available upon request.



**RAL#**

\*Available on select series. Consult product submittal for availability.

